

GLENDALE RV



**GLENDALE**

**RECREATIONAL VEHICLES**

**OWNER'S MANUAL**

**THIS FORM TO REPLACE WARRANTY OUTLINE ON INSIDE COVER OF OWNER'S MANUAL**

**GLENDALE RECREATIONAL VEHICLES  
Limited Warranty  
Travel Trailer, Fifth Wheel, Park Model  
Three Year Structural  
One Year Limited Warranty**

**WARRANTY OVERVIEW:**

Glendale warrants every Glendale recreational vehicle to the first retail consumer for a period of one (1) year and three (3) years on the structure from the date of purchase under normal use and service; when used for its intended purpose of recreational travel and camping that all parts of our manufacture are free from substantial defects in material and workmanship. The warranty period shall begin on the date the vehicle is sold to the retail consumer.

This warranty is expressly in lieu of all other warranties expressed or implied and all other obligations or liabilities on our part of any kind or character, including liabilities for alleged representations or negligence. We neither assume nor authorize any person to assume for us any liability in connection with the sale of recreation vehicle, other than expressed in the above paragraph.

Upon receipt of notice of a claim, the manufacturer or its authorized dealer will repair or replace any parts which it determines to be defective. The manufacturer's obligation shall be limited to such repair or replacement.

For a warranty claim to be honored, the owner must give written notice of his claim to an authorized dealer or the manufacturer not later than 10 days after the date the warranty period expires. This notice must include the serial number of the recreational vehicle.

All authorized dealers, whenever possible, will provide emergency repairs to a traveling owner if he finds himself in trouble while away from his home dealership. Because of the difficulty in determining whether the service required is warrantable, an authorized dealer may invoice and charge the owner, who in turn should submit said same invoice(s) to his home dealership for reimbursement.

**3 YEAR STRUCTURAL WARRANTY:**

Glendale warrants the structure of the sidewalls, floor and roof to be free of material and manufacturing defects.

**EXCLUSIONS:**

- (1) Items added or changed after the vehicle left the possession of Glendale, alterations made outside of Glendale's factory or without Glendale's knowledge, or in Glendale's judgement may change the effect, suitability or reliability of the coach.
- (2) Any vehicle used for commercial purposes, or full time residential use.
- (3) Normal wear and usage, such as fading or discoloration of soft goods (upholstery, drapes, carpet, vinyl, cushions, mattresses), fading or discoloration of exterior plastic or fiberglass components, tears, punctures, soiling, mildew, effects of moisture condensation inside the vehicle, or mishandling, glass, neglect, abuse, misuse, lightning or other acts of nature, or corrosive atmospheres which can result in rusting, oxidation or pitting.
- (4) Minor imperfections which do not affect the suitability of the vehicle for its intended use.
- (5) Normal and routine maintenance such as inspections, caulking, lubricating, adjustments, tightening of screws, tightening of lug nuts and wheels, sealing, rotating; cleaning, or damages arising from the failure to have maintenance performed as outlined in the Owner's Manual. Minor adjustments such as adjusting appliances, doors, windows, latches, mouldings, LP gas regulators, etc. which may be required after the first 90 days of the warranty period are considered normal maintenance.
- (6) Alignment or adjustments to axles or spindles when caused by improper maintenance, loading or damage from road hazards, including off road travel, wheel damage or balancing, or damage resulting from tire failures.
- (7) Loss of time, inconvenience, commercial loss, incidental charges such as towing, telephone calls, hotel bills, loss of use of trailer or any other consequential damage. Costs incurred for transportation of the vehicle to a dealer or Glendale Recreational Vehicles.
- (8) Units bought for rental purposes are covered by Glendale's limited three month or 20,000 km warranty. Other than installation, the appliances and chassis are covered by the original appliance or chassis manufacturer's warranty.
- (9) This Limited Warranty does not apply to or cover any component which is warranted separately by its manufacturer. Examples are: tires, axles, wheels, running gear components, batteries, appliances, TV's, VCR's, power converters, jacks, etc.

This warranty is not valid unless the warranty registration has been completed and mailed to Glendale Recreational Vehicles at the time of purchase. The written warranty provided by each component manufacturer is a direct responsibility of that manufacturer. Glendale makes no warranty as to those components. Please refer to the written warranties issued by such component manufacturers for the terms and provisions of their written warranty undertakings. Warranty information with respect to these items is available from your dealer.

# INDEX

Warranty Overview and Exclusions . . . . .	Inside Cover	Interior Care . . . . .	11
Towing Tips . . . . .	4	Floor Covering . . . . .	11
Tow Vehicle . . . . .	4	Cabinet Doors . . . . .	11
Hitch . . . . .	4	Paneling and Cabinets . . . . .	12
Coupling – Travel Trailers . . . . .	4	Fabrics . . . . .	12
Coupling – Fifth Wheels . . . . .	5	Stainless Steel Surfaces . . . . .	12
Loading Your Trailer . . . . .	5	Countertops . . . . .	12
Wheels . . . . .	5	Range and Refrigerator . . . . .	12
Tires . . . . .	5	Bathroom Components . . . . .	12
Changing a Tire . . . . .	5	Exterior Care . . . . .	12
Electric Brakes . . . . .	5	Aluminum Skin . . . . .	12
Electrical System Operation . . . . .	6	Aluminum Surfaces . . . . .	12
Drainage System Operation . . . . .	6	Fiberglass Skin . . . . .	12
Water System Operation . . . . .	7	Weather Sealing . . . . .	12
Winterization . . . . .	8	Vents - Doors - Screens . . . . .	13
Winterizing Your Water System . . . . .	8	Exterior Lighting . . . . .	13
LP Gas . . . . .	9	Cold Weather Operation . . . . .	13
LPG Safety Precautions . . . . .	9	Storage Preparation . . . . .	13
Loading Your RV . . . . .	10	Automotive and Auxiliary Batteries . . . . .	13
Driving Your Mini-Motorhome . . . . .	10	Chassis Prepping . . . . .	13
Speed Controls . . . . .	10	Tires . . . . .	13
Tire Change . . . . .	10	Appliance Vents . . . . .	13
Automotive Exterior Lights . . . . .	10	LP System Moisture Proofing . . . . .	14
Traveling . . . . .	10	Helpful Hints for the New Owner . . . . .	14
Traveling Guidelines . . . . .	11	Controlling Moisture Condensation . . . . .	14
Backing Up . . . . .	11	Effects of Prolonged Occupancy . . . . .	15
Parking . . . . .	11	Loading Check List . . . . .	15
Leveling . . . . .	11	Food . . . . .	16
Appliances . . . . .	11	Clothing . . . . .	16
Refrigerator . . . . .	11	Useful Equipment . . . . .	16
Stove and Oven . . . . .	11	Emergency Equipment . . . . .	16
Furnace . . . . .	11		
Water Heater . . . . .	11		

# TOWING TIPS

**Tow Vehicle** – The wide range of Glendale travel trailers and fifth wheels enables them to be towed by many types of vehicles. There is no substitute for the proper equipment when it comes to towing the additional weight of a trailer, so it is very important that you follow the recommendations of your tow vehicle manufacturer for the size and weight of the trailer you are towing. In selecting your new tow vehicle or adapting an existing tow vehicle to your new trailer, we recommend the installation of a trailer tow package consisting of heavy duty rear springs, radiator, alternator, transmission cooler, battery and shock absorbers. Tires with load-carrying capacity equal to the added hitch weight must be used. In most cases, an equalizing-type hitch should be installed to spread the hitch weight as evenly as possible over all wheels and axles.

**Hitch** – It is important to keep the tow vehicle and the trailer level in order to maintain equal weight distribution and ensure maximum steering control. Too much tension on the hitch torsion bars can have as much adverse effect on tow vehicle stability as does not having enough torsion bar tension. While the use of helper springs and/or overload shock absorbers will improve performance, for towing travel trailers the safest and best results are obtained when an equalizing hitch is used. The purpose of the weight equalizing hitch is to divide the load between the tow vehicle axles and the axle(s) of the trailer, which helps keep the tow vehicle basically level and maintains good handling and headlight alignment.

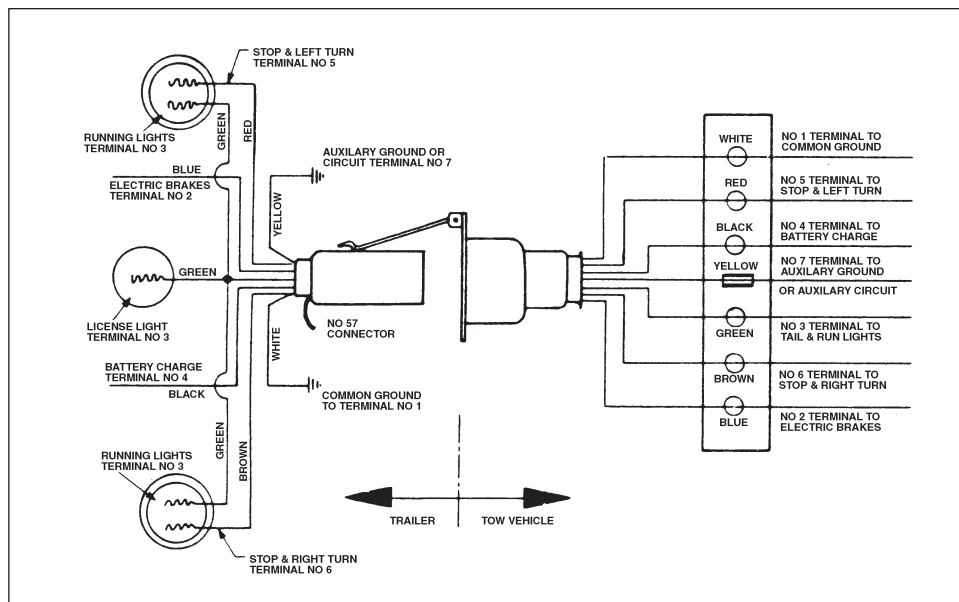
**Coupling – Travel Trailers** – Glendale travel trailers are all equipped with couplers designed to be used with a 2” or 2-5/16” hitch ball only. It is important to be sure that you have the right diameter hitch ball for your trailer coupler. We would also recommend that you lubricate your hitch ball with universal bearing grease or hitch ball lubricant which can be purchased at most RV dealerships.

Before dropping the coupler into the hitch ball, make sure the coupler locking arm is in an unlocked position and then lower the hitch jack until the ball is firmly seated in the coupler. The latch is then moved downward to secure the coupler around the ball.

**\*CAUTION\* – THE LOCK ARM ON THE COUPLER CAN GO DOWN EVEN IF IT IS NOT COMPLETELY LATCHED.**

Connect the safety chain in a criss-cross pattern so that the chains have satisfactory slack even when trailer is being turned very sharp, connect the breakaway switch lanyard so that lanyard will pull tight before chains are tight; then plug in the 12 volt DC electrical connector into the tow vehicle receptacle.

“SCHEMATIC RE 12V ELECTRICAL CONNECTOR”



**\*CAUTION\* – NEVER TOW THE TRAILER WITHOUT THE TRAILER BATTERY BEING HOOKED UP AND FULLY CHARGED. THE CABLE SHOULD BE ATTACHED SO THAT IT IS SHORTER THAN THE SAFETY CHAIN AND SO THAT THE PULL ON THE PIN IS IN A STRAIGHT LINE WITH THE CABLE. DO NOT HOOK THE CABLE OVER THE TRAILER BALL.**

Before proceeding, run an operational check of stop lights, turn indicators, and running lights and ensure that your door step is placed into its traveling position. Check the brakes, trailer first if possible, then both together (refer to instructions included with brake controller) and to ensure the tow vehicle side mirrors are in place and properly adjusted.

**Coupling – Fifth Wheels** – Open the hitch locking device in the truck and lower the tailgate if the tailgate has not already been removed for easier coupling and uncoupling.

Back the truck to engage hitchpin in the hitch latchplate. It is important that the pinbox strike the angled portion of the hitch for correct engagement (the angled portion then swings up during engagement). On some hitches, the latchplate will engage the kingpin automatically, but the handle grip must be pushed to the locked position (see manufacturer's instructions for full details). On other hitches, the same lever will be used to engage the kingpin (manually) and to lock it in position.

Visually check to see that the hitch is locked around the correct portion (smaller diameter) of the hitchpin. **THIS IS IMPORTANT!!**

Raise the tailgate of the truck if still attached, raise the front jacks of the fifth wheel trailer, then remove and store the pads.

Plug the electrical cord into the receptacle on the truck and attach the safety cable for the breakaway switch to part of the truck hitch. Keep the cable in a straight line with the switch on the trailer so that the pull on the pin is in a straight line with the cable and that there is enough slack to allow for turns.

**\*CAUTION\* – NEVER TOW THE FIFTH WHEEL TRAILER WITHOUT THE TRAILER BATTERY BEING HOOKED UP AND FULLY CHARGED, AS THE BATTERY IS THE POWER SOURCE TO THE ELECTRICAL BRAKES SHOULD THE TRAILER BECOME SEPARATED FROM THE TRUCK.**

Before proceeding, run an operational check of stop lights, turn indicators and running lights and ensure that your door step is placed into its traveling position. Check the brakes, trailer first if possible, then both together (refer to instructions included with the brake controller). Check wheel lug nuts for tightness and tire pressure before each trip.

## LOADING YOUR TRAILER

Do not overload either your trailer or towing vehicle. Trailer weight and weight distribution are major factors, both in safe handling and economical operation. An overloaded vehicle can become very unwieldy and thus create an unsafe condition in addition to placing excessive stress on the running gear. The trailer has been engineered to function at the gross vehicle weight rating (GVWR) when fully loaded with all the necessary traveling supplies. The GVWR and GAWR can be found on a label located on the exterior of your unit.

To determine when your loaded trailer is within these gross weight ratings, you must weigh your vehicle when loaded with all your traveling supplies. Any roadside weigh station should be able to assist in determining the axle weights and the overall weight. Front to rear weight distribution can be checked by

subtracting your axle weights from the total weight. This will show how much weight is located on your hitch. Remember that front to rear weight distribution will vary on most models depending on whether you have waste water in your holding tanks. It is advisable not to travel very far with your holding tanks full. Traveling as light as possible provides better fuel economy, decreased engine loads and easier towing.

## WHEELS

An important item for a trailer owner to remember is that it takes some time for the wheel lug bolts to seat in the wheels. It is important that these lug bolts are checked frequently while traveling (especially when new). Learn to check them before each trip and intermittently during long trips.

## TIRES

The tires on your trailer or fifth wheel were chosen for that unit on which they are mounted. When an original tire is replaced, make certain that the replacement tire is of equal rating. Check your tire pressure periodically to see that it conforms to the inflation levels as recommended by that manufacturer. The maximum capacities for the tires are indicated on the label on the exterior of your unit or on the spec sheet on the inside of your unit.

## CHANGING A TIRE

1. Place blocks in back and front of the tire on the opposite side to the one being changed.
2. Uncouple the trailer from the towing vehicle while on level ground.
3. Lower the front end of the trailer with the hitch jack.
4. Place stabilizer jack under each main frame member 2 - 3' from the rear end of the trailer chassis.
5. Loosen the wheel lug bolts prior to lifting the trailer.
6. Raise the front end of the trailer, using the hitch jack, high enough to lift some weight from the springs.
7. Place small jack under the axle and lift tire off the ground.
8. Remove tire and wheel.

## ELECTRIC BRAKES

All trailers and fifth wheels are equipped with electric brakes on each wheel which can be operated manually by applying the control level of the brake control, which is installed in your towing vehicle, as well as automatically by applying the brakes on your towing vehicle. For automatic operation, most experienced drivers prefer to have the trailer brakes start acting slightly before those of the tow vehicle. The reason for this is that the trailer is actually pulling against the tow vehicle thus keeping the two vehicles in alignment. This is particularly helpful during rainy weather as if the tow vehicle was to set its brakes first, the trailer would have the tendency to push the tow vehicle or possibly jack-knife.

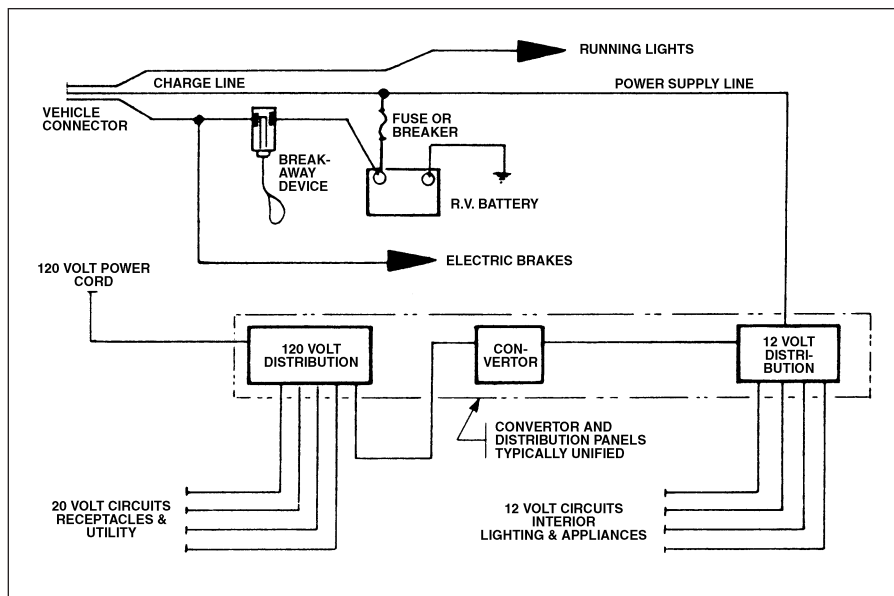
**Note – You may experience a squeaking of the brakes during the first few miles of break-in of new brake linings. This will ease in time so it is not a cause for concern.**

## ELECTRICAL SYSTEM OPERATION

Your recreation vehicle electrical system features a converter which enables you to use all 12 volt systems such as lights, range hood, power vents, water pump, furnace, etc, whether you are operating on batteries or external 120 volt power. Circuit breakers are provided for 120 volts and circuit breakers

or automotive-type fuses for the 12 volt system. Fuses and circuit breakers are located with the converter. The power converted automatically changes from 120V AC to 12V DC when the 120V cable is plugged in.

*"TYPICAL ELECTRICAL SYSTEM SCHEMATIC"*



FOLLOWING ARE PRECAUTIONS WHICH SHOULD BE TAKEN TO KEEP YOUR ELECTRICAL SYSTEM TROUBLE-FREE:

- Keep your power cord clean, dry and away from sharp objects which might cut the end.
- Do not let anyone but qualified persons repair or modify any portion of your trailer's electrical system.
- Do not nail or drill holes in your unit without first determining that no wiring will be damaged.
- Keep your converter clean, dry and do not block any of the venting provided, as the converter must have a free flow of air through and around it.

### **\*CAUTION\* – ALWAYS DISCONNECT THE POWER CORD BEFORE MAKING ELECTRICAL REPAIRS.**

- The trailer should be disconnected from the tow vehicle when parked in order to ensure that battery power is retained to start the tow vehicle.

Recharging the RV battery while the vehicle is in transit is done by means of a 12V hot line which connects tow vehicle battery to RV battery. The ability of tow vehicle to recharge RV battery is dependent on reserve capacity of tow vehicle alternator. Alternators supplied with some tow vehicles have a low amperage rating; therefore, the alternator has little reserve charge available after supplying the normal needs of the tow vehicle. If the reserve charge is low, then recharging is going to take an abnormal amount of time.

**\*CAUTION\* – WHEN TOWING AN RV WITH THE FRIDGE ON 12V ENERGY SUPPLY, ALWAYS TURN OFF 12V OR SWITCH ON TO ANOTHER ENERGY SOURCE WHEN YOU ARE TEMPORARILY PARKED FOR EXTENDED PERIODS OF TIME. THE FRIDGE WILL DRAIN THE RV BATTERY IN LESS THAN ONE HOUR IF POWER FROM ALTERNATOR IS NOT AVAILABLE.**

## DRAINAGE SYSTEM OPERATION

All recreational vehicles that have been provided with toilets or showers will have a holding tank installed to collect the waste from that function.

The fresh water toilet is connected directly to the water system of your trailer so that after each usage the contents are flushed from the bowl into the waste holding tank automatically by metered quantities or by manual operation of the toilet water pump. Refer to the toilet manufacturer for operation of the toilet in your unit.

Before using the toilet waste holding tank, prime the tank with approximately one (1) gallon of water and add a good grade of toilet chemical which can be obtained from your dealer. Do not use "Draino" or caustic-type materials in your drainage system as they can be harmful to the plastic materials used.

The grey water waste from the shower or sinks pass into a separate holding tank.

To drain your system, remove the dust cap, connect a sewer hose to the coupling in the main drain outlet and then open the toilet waste tank by pulling the valve handle with a quick motion. When toilet waste has completed draining, close the valve and pull open the grey water waste valve. Most experienced users will add a few gallons of fresh water into the toilet while the grey water is draining so that after the grey water has all been dumped and the valve to the grey water tank has been closed, the toilet waste valve can again be opened to drain any residual solids that might remain and also to flush your system with clean water.

**HINT – Park your RV so that the door side wheels are elevated by wooden blocks, etc. so that holding tanks have a greater slope to flush out holding tanks better. Flush out each holding tank by using a water hose or by back-filling the holding tank through the sewer hose.**

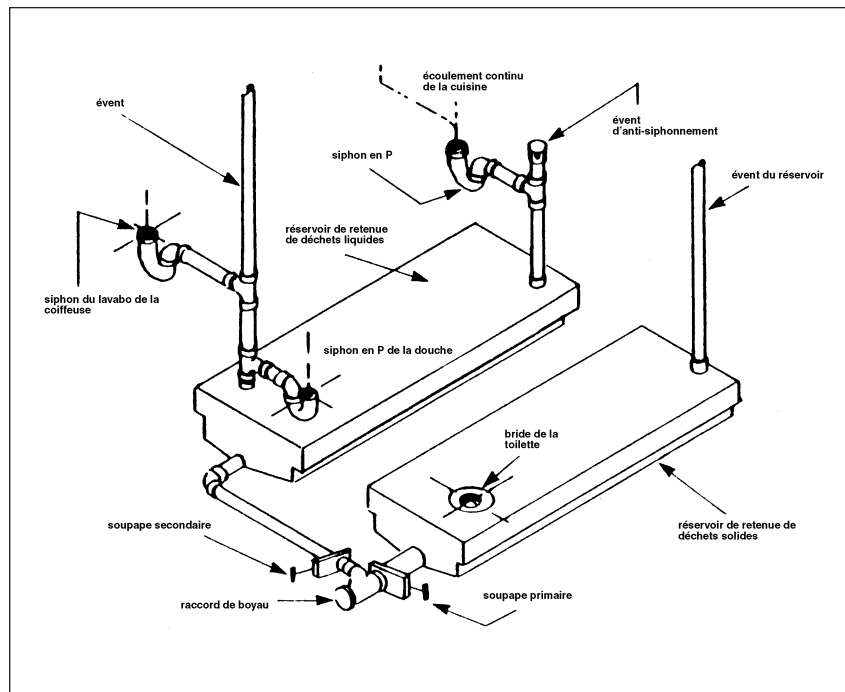
**\*CAUTION\* – NEVER LEAVE THE TOILET DRAIN VALVE OPEN CONTINUOUSLY WHEN PARKED AT A CAMPING SITE. THE TOILET HOLDING**

**TANK MUST HAVE FLUID IN IT TO OPERATE AND DRAIN PROPERLY. INSTEAD, USE IT AS YOU WOULD A SELF-CONTAINED OPERATION AND THEN DRAIN IT PERIODICALLY AS REQUIRED. THIS WILL ALSO HELP PREVENT ANY ODORS.**

**Note – After draining your holding tanks, a false reading may sometimes occur on your monitor panel due to debris or tissue hanging up on the sensor probes in the tank. Spray inside the tank with high-pressure water and this will usually solve the problem. Water vapor inside the holding tank will condensate on tank walls similar to condensation on windows at certain temperatures. This condensation on tank walls can also produce incorrect readings.**

**WARNING – Sewer drain cap must always be securely in place when the vehicle is in motion.**

*“TYPICAL DUAL TANK WASTE SYSTEM”*



## **WATER SYSTEM OPERATION**

Fresh water may be made available either by connecting a hose to an external water source normally available at a park or campground, or by filling the water tank through the water filler inlet provided on the exterior of your RV.

For self-contained operation, your RV is equipped with an “on demand” type pump system which senses the pressure drop the instant a water tap is opened and immediately starts pumping water from the tank into the system until the tap is turned off and the pressure again reaches the system balance. If your fresh water system has been fully drained, the following procedures may be necessary to allow the air in the lines to escape.

- Close all faucets in the kitchen, bathroom, shower and bathtub.
- Open all drain stoppers.
- Turn water pump switch “on”.
- Open the kitchen hot water faucet until air escapes and water runs constant (this may take a little time as your water heater has to fill before water will reach the taps).
- Close the faucet and repeat the procedure for the remaining faucets.

When all faucets are providing water when opened, the water system is ready for operation and the water pump switch can be left on.

The shower head in the bathroom is equipped with a handy water saver so that after the desired water temperature is achieved, you can turn water off and on at the shower head as required.

**\*CAUTION\*** – Do not leave water pump switch on if trailer is left unattended for some length of time. If any leak or break occurs in a water line connection, the pump will sense a pressure drop and continue operating until the water tank is drained.

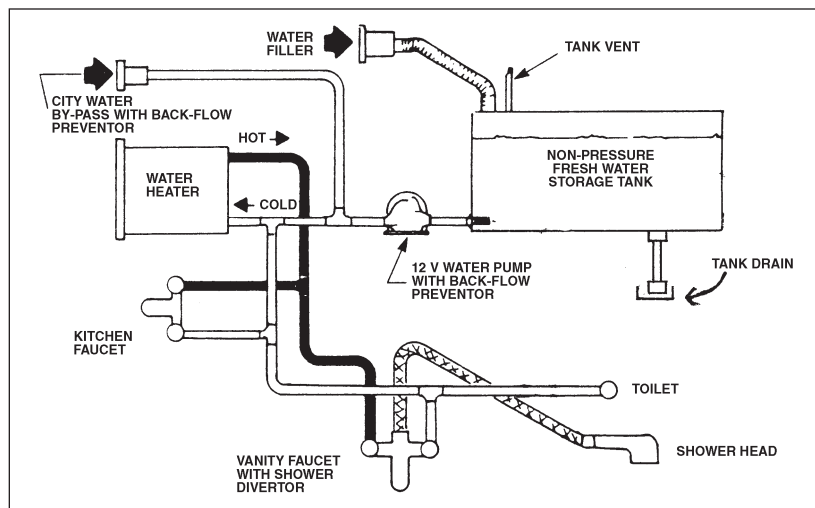
**\*CAUTION\*** – Pump damage may occur if pump is run dry.

**\*CAUTION\*** – Leave the water storage tank empty when not in use. Never leave water stand in the tank or piping over extended periods of time. A draincock is located either on the bottom of your tank or possibly on the side of your unit depending on your model.

**\*CAUTION\*** – Never fill your fresh water tank with a new hose or without thoroughly flushing any residual water from your hose first as this can result in a bad water taste. Use only RV-type hoses.

**WARNING** – USE POTABLE WATER (DRINKING QUALITY) ONLY IN YOUR WATER TANK. PERIODIC FLUSHING OF YOUR FRESH WATER SYSTEM IS RECOMMENDED BY DISSOLVING A BOX OF BAKING SODA IN A PITCHER OF WATER, POURING INTO THE TANK, THEN FILLING THE TANK AND LETTING IT STAND FOR 24 HOURS BEFORE THOROUGHLY FLUSHING OUT. WHEN DRAINING TANKS, OPEN ALL WATER TAPS.

“WATER SYSTEM SCHEMATIC”



## WINTERIZATION

Owners who do not take precautionary measures for winterizing their units inevitably find out that costly problems result. A small quantity of water pooled in a plumbing line expands as it freezes and cracks a pipe; water left in a bowl of a toilet damages a valve; a forgotten water heater bursts as the water left inside turns to ice; a tire goes flat, or a battery quits after only one season.

These are dramatic examples that could be very frustrating at spring shake-down time. These and other failures can be prevented with thoughtful winterization.

## WINTERIZING YOUR WATER SYSTEM

The most important task of winterization is protecting your unit's water and drainage system from freezing. To avoid this problem:

1. Drain your fresh water system.
2. Clean out your holding tanks.
3. Drain the water lines by opening the lowest outlet or drain in the system. Drain the water heater by opening water heater drain cock and pressure relief valve.

4. Remove the output line at the water pump. Turn the pump on and pump out any remaining water, possibly as much as a cupful. Use a towel or rag to catch the water. At this time, should you desire to blow out the lines, simply open all the faucets and apply air to the pump outlet line just removed.
5. For RV's with water heaters, a water heater bypass kit will minimize the amount of antifreeze required to winterize your RV. If a bypass kit is not used, then the water heater must be completely filled with antifreeze before antifreeze will flow through the hot water lines.
6. Re-attach the output line now, or later, as you desire.

This procedure will not completely clear all water lines of moisture, and so it is recommended that you introduce a potable, non-toxic recreational vehicle antifreeze into your water system.

**WARNING** – DO NOT USE ANTIFREEZE OTHER THAN ONE SPECIFICALLY DESIGNED AND RECOMMENDED FOR RECREATIONAL VEHICLES.

The following procedure will satisfactorily prevent your water system from freezing:

1. Install water heater bypass kit.
2. Pour into the fresh water tank 2 gallons of antifreeze.
3. Turn on the water pump (be sure all lines are hooked up).
4. Open each faucet until a change of watercolor is noted. (This includes the shower, toilet, kitchen faucet, and outside drains under RV draincock.)
5. Run the toilet until a similar change in the water's color is noted.
6. While the water system is being pressurized with antifreeze, also depress the "city pressure inlet" one way valve so that antifreeze flows outside the unit.
7. It is important to get a little antifreeze into the water heater and through water heater draincock.
8. Finally, be sure that antifreeze has circulated through the entire water system and that antifreeze is in all "P" traps.

## LPG

LPG (liquefied petroleum gas), also known as propane, is a true gas compressed into liquid form for easy transportation and storage. It converts into vapor from 44 degrees F below zero (-42 degrees C) for propane to 30 degrees F above zero (-1 degree C) for butane, and your appliances burn the resulting vapor.

Butane is often supplied in LPG tanks while you are in the USA and can freeze unexpectedly as you are returning to Canada during the spring.

**\*CAUTION\* – LPG IS POTENTIALLY LETHAL AND HIGHLY FLAMMABLE. IT IS HEAVIER THAN AIR AND WILL SETTLE AND FLOW ON A SURFACE LIKE WATER. IT GIVES OFF A NOXIOUS ODOR. IN A CONFINED SPACE IT IS HIGHLY EXPLOSIVE. THE BY-PRODUCT OF A PROPERLY ADJUSTED FLAME IS CARBON DIOXIDE AND WATER VAPOR. AN IMPROPERLY ADJUSTED FLAME CAN PRODUCE CARBON MONOXIDE, AN ODORLESS, POISONOUS GAS. BURNING**

**ALSO REDUCES THE OXYGEN CONTENT OF THE AIR. YOUR UNIT IS EQUIPPED WITH ROOF VENTS AND WINDOWS WHICH OPEN. OPEN THEM!! IF OUTSIDE VENTILATION IS NOT PROVIDED, THE RESULT COULD BE ASPHYXIATION FOR THE OCCUPANTS.**

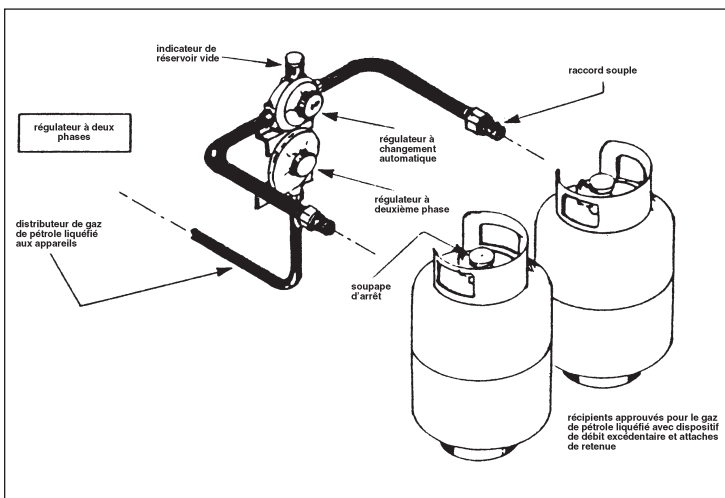
**NEVER USE THE RANGE/STOVE TO HEAT YOUR RV!!!!**

## LPG SAFETY PRECAUTIONS

Because LPG can be dangerous to use if not handled properly, some basic practices for safe and trouble-free usage of your LPG system are listed:

1. Have your tank(s) filled at an authorized or licensed LPG Station.
2. Propane hoses have counter-clockwise threads to tighten to tank.
3. When using the tank, open the shut-off valve all the way, then close 1/4 turn. This will always enable you to determine whether the valve is open or closed.
4. Check all tank and line connections each time you refill your propane tank to be sure they are tight. When testing for leaks, use soapy water – not matches!
5. Make certain your tank is properly fastened in place.
6. Under no circumstances should the LPG regulator be adjusted except by an authorized or licensed LPG serviceman.
7. When transporting your tanks for filling, secure them against falling or rolling and never transport, install or store any LPG tank inside your unit.
8. Never attach a lock or device requiring a key or any other impedance to opening the LPG compartment access door. In an emergency, the tank service valve should be readily accessible.
9. Never use an upright tank in a lay-down position, or a lay-down tank in an upright position.
10. The outside of your tank should be kept from rusting by applying a coat of good paint as needed.
11. It is recommended that your system be turned off at the tank while traveling.
12. If an odor of gas is present, do not light any of the appliances until the leak has been repaired.
13. For initial lighting of an LPG appliance, it may be necessary to bleed the LPG supply line of trapped air before the appliance will light. To do this, open the burner valve and hold a lighted match near the burner opening until the burner lights. This will vary depending on the distance the appliance is located from the LPG tank.
14. Practice safety at all times. If you have questions about the operation of your appliance or LPG system, contact your local LPG or RV service dealer.

*"TYPICAL LPG SYSTEM"*



## LOADING YOUR RV

Properly loading your recreational vehicle is of utmost importance for your driving comfort and safety.

Pack heavier items such as canned foods, beverages and other heavy items such as tools and cooking utensils as low in the RV as possible. Overhead storage should be reserved for lightweight objects such as paper products, bedding, clothing or dry foods.

You should make every effort to distribute the load as evenly as possible throughout the RV, generally trying to keep heavier objects as low as possible and between the axles if your RV is a mini-motorhome.

Using the following information, you can readily calculate your unit's cargo capacity. Proper loading will become routine as you gain some travel experience.

### A. GROSS VEHICLE WEIGHT RATING (GVWR)

The GVWR of your recreational vehicle can be found listed on the CSA CERTIFICATION LABEL on the side of your unit. It can also be found on the CSA specification label located on the inside of the wardrobe door. This figure represents the maximum weight that your unit can safely weigh, including the weight of your recreational vehicle and any additional weight which could be added in cargo. IT IS IMPORTANT THAT THIS FIGURE BE FOLLOWED WHEN LOADING YOUR UNIT.

### B. GROSS AXLE WEIGHT RATING (GAWR)

The GAWR of your recreational vehicle can also be found on the label which lists the GVWR. These also are important figures to follow when loading your recreational vehicle with personal cargo.

## DRIVING YOUR MINI-MOTORHOME

### A. Instrument Panel and Steering Column Controls

The instrument panel (instruments, controls, gauges, warning and indicator lights) and steering column controls (pedals, gear selectors, turn signal indicator and ignition switch) function like those used in most automobiles.

See the chassis manufacturer's manual for further details.

### B. Basic Tips in Driving Your Mini-Home

**Automatic Transmission** – The automatic transmission in your mini-home will allow you "shift-free" operation in the Drive (D) range, while still allowing upshifting or downshifts to a lower gear for certain driving conditions. Following is an explanation of the selector position.

**P – PARK** The park position locks the rear wheels and transmission even when the engine is running. To prevent damage to the transmission, come to a complete stop before shifting into the park position. **DO NOT USE THE PARK POSITION AS A SUBSTITUTE FOR THE PARKING BRAKE. ALWAYS SET THE PARKING BRAKE WHEN YOU LEAVE YOUR VEHICLE!**

**R – REVERSE** Use for the backward movement of your unit. The vehicle must be in a complete stop before shifting into or out of the reverse position.

**D – DRIVE** The normal driving position, vehicle automatically shifts into the correct gear.

**2 – LOW** For slippery surfaces, traffic braking, or speed descents. The vehicle starts and remains in second. Do not shift into second gear above speeds recommended by the chassis manufacturer.

**1 – LOW** Vehicle starts and remains in low gear for sustained pulling or breaking power on hilly terrain.

## SPEED CONTROLS

Your unit may be equipped with a speed control device, which automatically controls speed at over 30 mph. This type of speed control depends upon whether it is original chassis equipment and will vary with the chassis type and chassis model year. Also, there are several types of speed controls which may be installed by the RV manufacturer.

The speed controls may be on the turn signal level, on the spokes of the steering wheel, or on the dashboard. Despite the varying locations, the basic operations of each is similar. However, certain speed control devices have specific differences, so it is important that you read carefully the instructions in the chassis manufacturer's owner's guide or those furnished by the manufacturer of the speed control device.

## TIRE CHANGE

Change a tire on as level and firm a surface as possible. If you are on the roadside, activate the vehicle's hazard warning flashers. Apply parking brake and move transmission selector to Park (P). Set up flares and/or warning lights. See the chassis manufacturer's owner's manual for specific jacking and tire removal and replacement instructions which pertain to your unit. Stop at the nearest service facility and have the torque checked.

## AUTOMOTIVE EXTERIOR LIGHTS

All exterior lights should be checked after each trip to make sure that each light is operating properly. Don't overlook the brake and turn signal lights – try them to be safe. Your exterior running lights, brake, turn signals and back-up lights are double fused for your safety. If any of your exterior lights fail to function, check the fuse box for a damaged fuse. If an individual bulb is inoperative, check the bulb and groundwire for that light.

## TRAVELING

Check in all directions and accelerate slowly to a safe speed. Don't forget the operation of your new mini-home will be a new experience and caution in handling should be followed until you feel comfortable behind the wheel.

When you come to a hill, accelerate a bit more than usual, but don't be afraid to downshift, even with an automatic transmission. Under no circumstances, lug the engine. If it takes low gear to climb the hill, go down the other side in low gear.

You will have very little trouble on gradual turns, but for sharp turns, reduce speed and take into consideration any obstacles located close to the curb.

Stopping is extremely important. You should consider the total weight of the vehicle as it is much greater than your normal automobile or that which you may be used to. You should try to anticipate stop signals, side traffic, etc. Decelerate slowly, if possible, and downshift to prevent abrupt stops which puts undue strain on springs, shock absorbers, brake shoes and reduce tire life.

## TRAVELING GUIDELINES

Never attempt to travel without proper instruction.

1. Always consider the effects of wind, weather, road surface, and traffic conditions when selecting your speed.
2. Always use extreme caution when going downhill. Excessive speed while going downhill may cause you to lose control of your vehicle.
3. Be extremely cautious when passing another vehicle when going downhill.
4. Never attempt to pass another vehicle in the sharp curve or where your view of the road ahead is otherwise restricted.
5. Always check the operation of your brakes and lights before embarking.

## BACKING UP

After arriving at your destination, your next task is picking a good level parking space and backing into it. A recommended procedure for backing into a space is as follows:

1. Stop near the site. Get out and look it over. (Check the site for low-hanging tree limbs, posts, large rocks, etc.)
2. Always try to place the site to the left of you. This way you can see what the recreational vehicle is doing while you are backing up. If the site is on the right, you will be backing into the blind side, which is more difficult even when using the side mirrors as a guide.
3. With everything clear, maneuver your mini-home into position for backing into the site.
4. Slowly back up using the side mirrors as your guide. The procedure will be made easier if a second party is there to help in guiding you to the desired location.

## PARKING

1. Level all four wheels.
2. Block wheels.
3. Connect 120 volt power connector.
4. Open gas valve at tank.
5. Connect to fresh water supply.
6. Connect to sewer system.
7. Pressurize water system.
8. Start and run refrigerator.
9. Light water heater.

## LEVELING

It is important that your mini-home is level, as the oven and refrigerator may not operate properly if it is otherwise. Using a level, check levelness and correct by either digging out under the high wheel or utilization of a leveling ramp for the low wheel.

## APPLIANCES

Most LPG appliances have lighting procedures on a plate that is permanently attached to the appliance.

For further information, please refer to the specific manufacturer's manual included in your warranty package. All appliances are guaranteed by separate warranties from each of their manufacturers.

## REFRIGERATORS

The gas/electric refrigerator operates on LPG fuel or 120 volt AC electric power. Some units are equipped with 3-way refrigerators which also operate on 12 volt DC. 12 volt is designed as a secondary power source and should only be used while the vehicle is in transit.

**NOTE – LPG should not be used for refrigeration while towing your trailer or driving your motorhome.**

## STOVE AND OVEN

The burners and oven operate on LPG fuel. Refer to the separate manual for operating instructions and precautions.

## FURNACE

The furnace operates on LPG fuel. Follow lighting instructions found in the manufacturer's operating instructions. Be sure all heat registers are open and unobstructed to prevent the furnace from cycling.

## WATER HEATER

The water heater operates on LPG. Some models may contain an optional electronic ignition system rather than a pilot light system. Refer to the operating instructions manual for the water heater installed in your vehicle.

**NOTE – Before lighting the water heater, make sure that it is filled with water. This can be checked by turning on the hot water faucet at the sink. If water flows, the heater is full of water.**

## INTERIOR CARE

Standard household products are generally all that are needed to keep your unit looking like new. There are important exceptions, however, so read each section on cleaning very carefully. In all cases, avoid using abrasive cleansers or solvent-type cleaners. These products contain ingredients which can damage many kinds of interior finishes.

## FLOOR COVERING

High quality carpet is available on many models. Frequent vacuuming will quickly remove loose dirt and sand. Should the carpet become more deeply soiled, use a standard household carpet cleaner. For stains, first determine the specific kind of stain involved, then refer to a later section on the removal of various types of stains from fabrics.

## CABINET DOORS

Many models contain natural wood oak doors. If your model contains these oak doors, care for them as you would a fine wood surface in your home. Apply a protective coating of furniture polish periodically to preserve the finish and use aerosol furniture polish for quick touch-ups. If cleaning becomes necessary, use a mild detergent solution on a soft cloth. Wipe with a clean damp cloth and then dry.

## **PANELING AND CABINETS**

Your paneling and cabinets contain a vinyl-covered finish for durability and easy maintenance. Clean these surfaces with all-purpose household spray cleaner or mild detergents. Never use solvents or abrasive cleaners.

## **FABRICS**

Your recreational vehicle has a number of types of fabrics such as draperies and mattress materials. Draperies should be dry-cleaned only. Even most careful spot cleaning will often leave residual marks in the fabric. Do not launder them. Check with your cleaner before having any fabric cleaned as rubber-backed fabrics can be damaged by dry cleaning.

On other fabrics, use a foam-type fabric cleaner whenever possible. If a stain is particularly greasy, solvent-type cleaning fluid may be used but directions for that product should be carefully followed. Since some solvent may damage foam cushions, insert a non-porous object such as heavy coated cardboard between the seat cover and cushion while cleaning. Use solvent cleaners only with adequate ventilation.

For all but complete cleaning, seat covers should be left on their respective foam cushions. If overall cleaning is necessary, have them dry-cleaned by an upholstery firm. Do not launder this fabric as shrinkage may result.

## **STAINLESS STEEL SURFACES**

Cleaning with a household liquid detergent and water followed by thorough rinsing is all that is needed to care for stainless steel. After cleaning, wipe dry to prevent water spotting. For persistent stains, use a paste of mild powdered cleanser and water. Rub in the direction of the polish lines in the surface.

Never use scouring powder, scouring pads, or steel wool. Also avoid leaving salt, mustard, catsup or mayonnaise spills on contact with stainless steel. These can cause pitting of the surface. Fingerprints can be minimized by applying a light coating of household spray wax after the surface has been cleaned.

## **COUNTERTOPS**

Formica-type high-pressure laminated countertops are standard on all products. Clean countertops regularly with a mild household detergent and warm water. These surfaces should not be used as cutting boards nor should hot utensils be placed directly on them. Always use a pad under hot pots and pans. Clean these surfaces with mild soap and water and coat with household spray wax to retain brightness.

## **RANGE AND REFRIGERATOR**

Cleaning the range and oven in your recreational vehicle is similar to cleaning your home range. The stove top is removable for easy access to the area below the burners. Clean the exhaust fan filter frequently to remove greasy deposits before they build up. Remove the filter by sliding it out of the retainer track, and clean with a mild detergent solution and soft brush.

To clean the refrigerator, first wash out the cabinet with a mild soap solution. Rinse with a second solution of baking soda and water to help deodorize the refrigerator. Buff lightly with a soft cloth. When the unit is in use, be sure to wipe up food spills promptly.

Never use scouring powder, steel wool, or solvent-type cleaners. These can scratch the cabinet and damage the door seals. When your RV is not in use, leave the refrigerator door(s) open and leave a cupful of baking soda inside to absorb any residual odors.

## **BATHROOM COMPONENTS**

Major bathroom components on most models are made of durable fiberglass. To clean, use a mild detergent solution. For stubborn stains, an automotive liquid cleaner is ideal. Never use abrasive or solvent cleaners, steel wool, ammonia, or similar cleaners as these can scratch and dull the finish. Also keep the floor area clean of sand and other abrasives to prevent scratches. To retain the original shine, apply a light coating of liquid automotive wax and buff with a soft, dry cloth.

To clean the standard marine toilet, use mild household cleaners whenever possible. Special toilet bowl cleaners may be used but only if flushed completely through the holding tank within a short period of time. These are particularly strong cleaners and can damage the holding tank if not properly emptied.

## **EXTERIOR**

### **ALUMINUM SKIN**

The exterior of your RV has a baked-on automotive-type enamel finish that is as easy as cleaning your car. We recommend that you periodically wash the exterior to retain its original luster and appearance. Wash with cold or lukewarm water and a mild soap, but avoid chemical solvents, strong detergents or abrasives. Rinse thoroughly with clean water, dry, wax and polish to preserve its gloss.

The insert rail, mouldings, compartment frames, window frames and trim are aluminum and should be cleaned as recommended above. **DO NOT USE CHROME POLISH ON ALUMINUM SURFACES.** The chrome surfaces such as door handles, mirrors, and other trim will retain their brightness if cleaned with soap and water.

### **ALUMINUM SURFACES**

**ROOF** – Your RV roof has been installed with waterproof sealants at the seams and vents. Since you will want to keep the roof in a watertight condition, it is recommended that periodic applications of roof seal be made. These products are available at RV supply stores.

**EXTERIOR DOORS** – A periodic application of a graphite lubricant to the hinge and lock mechanism is recommended.

### **FIBERGLASS SKIN**

Some models feature a complete fiberglass exterior skin. Washing, waxing and polishing may be conducted in the same manner as for the aluminum exterior skin. Precautions should be taken in the use of strong detergents, solvents such as lacquer thinners and other harsh abrasives.

### **WEATHER SEALING**

It is a good practice to inspect the entire exterior of the RV for proper weather sealing around the frames of all windows, doors, compartments, vents and mouldings. Missing, dried-out or damaged caulking should be replaced.

## VENTS - DOORS - SCREENS

In the event of damaged vents, vent pipes and bent or damaged compartment doors, it is a good practice to replace at your very earliest. Lubricate all hinges, locks, window mechanisms and springs periodically. Clean windows and window screens.

## EXTERIOR LIGHTING

Before each trip, turn on your running lights and inspect all clearance lights, identification lights, marker lights, stop lights and turn signal lights. Replace burned out bulbs immediately. Keep all light lenses clean with soap and water.

## COLD WEATHER OPERATION

Many recreational vehicles are designed to facilitate cold weather operation. However, successful operation of your unit during cold weather depends on your understanding of the effects of freezing temperatures on the unit's system. Cold weather travel is an exciting adventure if certain precautions are followed:

1. ALWAYS keep your unit heated. Do not give the water lines a chance to freeze.
2. Maintain an adequate supply of LPG. When you notice the level of the tank is at the half-way mark or below, have it filled.
3. If you plan to stop overnight, try to gain access to shore power in order to keep the batteries charged. A charged battery is essential to the operation of your RV furnace.
4. When stopping for any length of time, park facing either north or south so the sun will help warm the unit.
5. While stopped, open one window slightly to prevent condensation in the living area.

**WARNING – NEVER USE COOKING APPLIANCES TO PROVIDE HEAT. THE RANGE AND OVEN DRAW AND VENT OXYGEN FROM THE INTERIOR OF THE UNIT. MISUSE OF YOUR COOKING APPLIANCES COULD RESULT IN ASPHYXIATION!!!!**

## STORAGE PREPARATION

### GENERAL INFORMATION

For interior and exterior storage preparation, follow the suggestions outlined in Exterior Care and Cleaning and Interior Care.

### Other Suggestions

- Sunlight fades carpeting, drapery and upholstery. Remove curtains for cleaning (dry clean only) and mask the windows with newspaper.
- Leave a screened window slightly open for ventilation.
- Remove all objects subject to freezing (i.e. canned goods, beverages, cleaning supplies, etc.).
- Thoroughly clean the refrigerator and prop open the door(s) for ventilation and to prevent odors from developing.
- Remove the roof air conditioner filter, clean and then replace. You may further protect a roof air conditioner with a commercially available vinyl cover.

- Remove the clock battery and coat the contact points with petroleum jelly.
- Check all roof seams for cracks and, if necessary, apply a quality aluminum roof coating around vents and along seams.
- To prevent refrigerator damage, remove the refrigerator vent cap and seal the vent with plastic. This will also discourage unwelcome visitors such as birds who somehow are drawn to such nooks for nesting.
- Put powdered graphite into all door locks and apply a lubricant to all door hinges, inside and outside, to prevent freezing.

## AUTOMOTIVE AND AUXILIARY BATTERIES

Batteries will self-discharge if not used for a period of time. You can slow this process and bring your batteries through a hard winter by following simple precautions.

1. Check water levels and make sure batteries are fully charged.
2. Disconnect cables and coat cable ends with petroleum jelly.
3. Batteries can be left in your mini-home, or may be stored in a cool, dry place.
4. Check the batteries' charge condition monthly, and bring them to full charge with a trickle charger if necessary.

## CHASSIS PREPPING

Your mini-home should be thoroughly prepped for winter. An automotive dealer or service station should:

1. Change the oil and filter.
2. Replace gas line filter.
3. Check antifreeze coolant level.
4. Fill gasoline tank to minimize condensation.

If you do not plan on moving your mini-home, remove the spark plugs, place some oil in the cylinders, replace the spark plugs by only lightly sealing them.

If for some reason you cannot prep your mini-home, make it a point to run the engine for about 20 to 30 minutes each month. If so equipped, be sure to operate the automotive air conditioner compressor at this time to help prevent its seals from drying out.

## TIRES

Sunlight and unchanging weight can damage tires. Ultraviolet rays promote dry rotting of the walls, so cover your tires. Steady weight creates weakened flat spots. Take the weight off your unit by jacking and using an approved jackstand. Decrease the air pressure to reduce stress.

## APPLIANCE VENTS

Open vents are invitations to field mice and other small critters looking for shelter. If they gain entry, you're likely to find a messy clean-up and repair job on your hands in the spring. It is much easier to keep them out.

Place foil over the exterior panels for the refrigerator and water heater. Similarly, close off roof vents ventilator fans and furnace vents. Don't forget to cover the air conditioner.

## LPG SYSTEM MOISTURE PROOFING

Though the LPG system is almost immune to cold weather, moisture can freeze in the LPG regulator vent. Also, moisture that may inadvertently enter the tank when the tank was disconnected, can cause future problems with LPG appliances.

Don't take the chance. Have an LPG attendant put some anhydrous methanol in the cylinders to combat moisture and cover the regulator to shield it from snow and rain.

Also, wash the cylinder and eyeball it for chipped paint. Touch up as needed with a quality outdoor paint.

## HELPFUL HINTS FOR THE NEW OWNER

Your RV will give you a great deal of pleasure. To ensure safe operation, make sure you and your crew take time to study your Owner's Manual and the Appliance Manufacturer's manuals. As you travel you will undoubtedly receive "tips" from veteran owners that will make your traveling even more enjoyable. Following are a few to get you started:

1. Remember to avoid low tree branches and low bridges.
2. Use manned toll gates. Usually you will be charged one class more than for a car.
3. Showers can take a lot or a little water. Take (navy) "sea showers" by wetting down, turning off the water with the on/off button on the showerhead, soaping up and then turn water back on to rinse.
4. Nothing will single you out as a bad camper quicker than dumping sewage other than in an approved dumping station.
5. For most effective air conditioning remember to park in the shade. Keeping out the sunlight (direct rays or reflected) with the curtains will just about double the air conditioner's effectiveness. To air condition one part of your RV faster or more effectively, draw the isle divider curtain to reduce the amount of space to be cooled.
6. Many travelers find sleeping bags save much work when preparing for bed. In cold climates, they even take less room than blankets and are more effective.
7. The door step is convenient, but make sure that when you drive off you have it tucked up. It projects out from the body and it could be damaged scraping on curbs.
8. When in motion, be sure that the pin or lever which secures the refrigerator door is securely in place. If you don't you are liable to hit a bump and food will be flying everywhere. Also, don't load the fridge too full and after a rough trip, open the door carefully so that you don't have food falling out.
9. It is a good idea to remove objects from places like the top of the dinette table and the kitchen work areas when in motion, as they tend to slide off if the unit has to stop suddenly.
10. Plastic containers with tight-fitting caps are much better than carrying pierced containers of liquids such as milk and orange juice.
11. Since your unit is self-contained, you will find stopping in out-of-the-way places such as service stations, shopping centre parking lots, church yards, or even a farmer's field will add variety to your trip. When camping on private property, always ask permission. Clean up the site when leaving. Be sure to thank the owner. Help those who come after you.
12. During peak tour season and holidays, it is sometimes necessary to phone ahead and make reservations at the park you are going to stop at.
13. Carry a laundry bag for soiled clothing. Along the road, you will find laundromats in practically every town. A short break at the laundromat could be a welcome relief from traveling while you freshen up for another week on the road.
14. Be careful not to leave any food stuffs, soap or odor-causing materials in your unit for any extended period of time. Damp clothing, hunting gear, etc. should never be stored in closets or drawers. Always dry thoroughly before putting away.
15. If needed, a fire extinguisher can save your life. One has been included in your unit. Make sure it is always charged.
16. Try to make your last gas stop of the day a complete all-inclusive stop. Pick up groceries, newspapers, or anything else that may be needed. Avoid having to leave your parking place after you arrive. You will have more time to relax that way.
17. Always taste the water before filling your tanks in an unfamiliar location. Some water contains salt or alkali; in other areas it may have a sulphur taste. Never use a new hose for filling your tank as they leave a distinctive taste.

## CONTROLLING MOISTURE CONDENSATION

You can reduce or eliminate interior moisture condensation during cold weather by taking the following steps:

- **Ventilate with Outside Air**

Partially open one or more roof vents and one or more windows to provide controlled circulation of outside air into the interior. While this ventilation will increase the furnace heating load, it will greatly reduce or eliminate water condensation.

**NOTE – Even when it is raining or snowing, ventilation air from outside will be far drier than interior air and will effectively reduce condensation.**

- **Install tight fitting storm windows to reduce or eliminate condensation on window glass.**

The interior surface of the storm window will be at least 20 degrees warmer, reducing moisture condensation. **DO NOT COVER THE EMERGENCY EXIT WINDOW.** This window must be left accessible at all times for emergency exit.

- **Reduce moisture released inside the trailer.**

Run the range vent fan when cooking and the bath vent fan (or open the bath vent) when bathing to carry water vapor out of the trailer. Avoid making steam from excessive boiling or use of hot water. Remove water or snow from shoes before entering to avoid soaking the carpet. Avoid drying overcoats or other clothes inside the trailer. **WARNING – DO NOT HEAT THE TRAILER INTERIOR WITH THE RANGE OR OVEN.** In addition to the hazards of toxic fumes and oxygen depletion which make heating by the range or oven very dangerous, open flames add moisture to the interior air increasing condensation.

Do not use an air humidifier inside the trailer. Water put into the air by the humidifier will increase condensation.

- **Ventilate Closets and Cabinets**

During prolonged use in very cold weather, leave cabinet and closet doors partially open to warm and ventilate the interiors of storage compartments built against exterior walls. The air flow will warm the exterior wall surface, reducing or eliminating condensation and preventing possible ice formation.

## EFFECTS OF PROLONGED OCCUPANCY

Your travel trailer was designed for recreational use and short term occupancy. If you expect to occupy the trailer for an extended period, be prepared to deal with condensation and the humid conditions that may be encountered. The relatively small volume and tight construction of a modern recreational vehicle means that the normal living activities of even a few occupants will lead to rapid saturation of air contained in the trailer, and the appearance of visible moisture, especially in cold weather. If you know the signs of excessive moisture and condensation, you can minimize their effects.

Just as moisture collects on the outside of a glass of cold water during humid weather, moisture can condense on the inside surfaces of your trailer during use in cold weather when humidity of the interior air is high. This condition is much greater in a recreational vehicle than in most houses due to the small size and tight construction of the vehicle which allows a quick build-up of high moisture levels in the inside air.

The air inside a recreational vehicle can contain a surprisingly large amount of water vapor. Estimates indicate that a family of four can vaporize up to three gallons of water daily through breathing, cooking, bathing and washing. Unless this water vapor is carried outside by ventilation, or condensed by a dehumidifier, it will condense on the inside of windows and walls as moisture, or in cold weather as frost or ice. It may also condense out of sight into the walls or the ceiling where it will manifest itself as stained panels. Appearance of these conditions indicates a condensation problem.

- **Install a Dehumidifier Appliance**

During prolonged, continuous use, a dehumidifying appliance may be more comfortable and effective in removing excess moisture from the interior air. While use of a dehumidifier is not a "cure-all" and ventilation, storm windows, and moisture reduction continue to be important, operation of the dehumidifier will reduce the amount of outside air needed for ventilation. Heating load on the furnace will be reduced, and the interior will be less drafty.

# LOADING CHECK LIST

To aid in preparing for your trip, the following check list should give you the essentials for comfortable traveling:

### LINENS

- \_ Sleeping bags
- \_ Sheets
- \_ Pillows and pillow cases
- \_ Mattress pads
- \_ Extra blankets
- \_ Laundry bags

### COOKING

- \_ Can opener
- \_ Bottle opener
- \_ Spatula
- \_ Long fork
- \_ Serving spoons
- \_ Sharp knife
- \_ Coffee pot
- \_ Scissors
- \_ Shot glass
- \_ Hot pads and oven mitts
- \_ Paper towel
- \_ Pot with lid
- \_ Oven pan
- \_ Plastic shaker
- \_ Aluminum foil
- \_ Wooden matches
- \_ Plastic bags
- \_ Plastic waste baskets
- \_ Measuring spoons
- \_ Cutlery
- \_ Dishes
- \_ Skillet

### BATHROOM

- \_ Shampoo
- \_ Toothbrush and tooth paste
- \_ Combs and brushes
- \_ Bath and beach towels
- \_ Shower caps
- \_ Toilet kits
- \_ Shaver
- \_ Toilet tissue

### CLEANING

- \_ Scouring pads
- \_ Cleanser
- \_ Hand soap
- \_ Sponges
- \_ Laundry soap
- \_ Cleaning rags
- \_ Air freshener
- \_ Broom
- \_ Small hand vacuum

### PERSONAL

- \_ Credit card(s)
- \_ Traveler's cheques
- \_ Money
- \_ Driver's license
- \_ Proof of Citizenship
- \_ Camera equipment and film
- \_ Games, toys, coloring books
- \_ Fishing equipment
- \_ Binoculars
- \_ Extra eye glasses
- \_ Sunglasses
- \_ Pocket knife
- \_ Sewing kit
- \_ Rain gear
- \_ Compass

### MISCELLANEOUS

- \_ String
- \_ Clothes line
- \_ Fly swatter
- \_ Insect repellent
- \_ Masking tape
- \_ BBQ grill and charcoal
- \_ Lighter fluid
- \_ Books and magazines
- \_ Extension cords
- \_ Notebook and pencils
- \_ Napkins
- \_ Hammer and nails
- \_ Small shovel
- \_ Flashlight

## **FOOD**

Do not attempt to take sufficient food for your entire trip. The availability of supermarkets is such that fresh food, meat, and vegetables are always close at hand. Your refrigerator should never be so full that cold air cannot circulate around the food. Use plastic containers with tight-fitting lids for fluids. Remember seasonings.

## **CLOTHING**

The amount and type of clothing you will need for your trip will depend entirely on where you are going and for how long. A good rule is to take along at least one special change of clothes for each traveler. When taking children on trips, separate their clothes and give each child responsibility for his/her own parcel of clothing. A duffel bag comes in handy for soiled clothing. Most campsites have public laundromats in which you will be able to wash and dry soiled clothing. Avoid putting clothing away damp as they could mildew, rot and cause odors. If you are going near mountains, take along a warm jacket for everyone.

## **USEFUL EQUIPMENT**

- Tool box and assortment of small tools
- Tow rope or chain
- Plastic bucket for carrying water
- Wheel blocks for leveling your unit
- Water hose and "Y" connection, in case of two units on one water outlet
- Sewer hose
- 100' 3 wire electrical cord with at least 30 amp. capacity
- Jumper cables
- Spirit level (a level unit is required to keep the fridge in operation)
- Short-handled shovel (it may be necessary to dig a small hole to lower a wheel while leveling)
- Spare fuse and bulb accessories

## **EMERGENCY EQUIPMENT**

Carry the following items as basic emergency equipment. Some of these items are standard on the unit or are available from your dealer.

- First aid kit
- Hydraulic jack and lug wrench
- Spare tire
- Fire extinguisher
- Flashlight
- Road emergency flares

# NOTES:

# NOTES: