

Titanium

GLENDALER V
PEARL

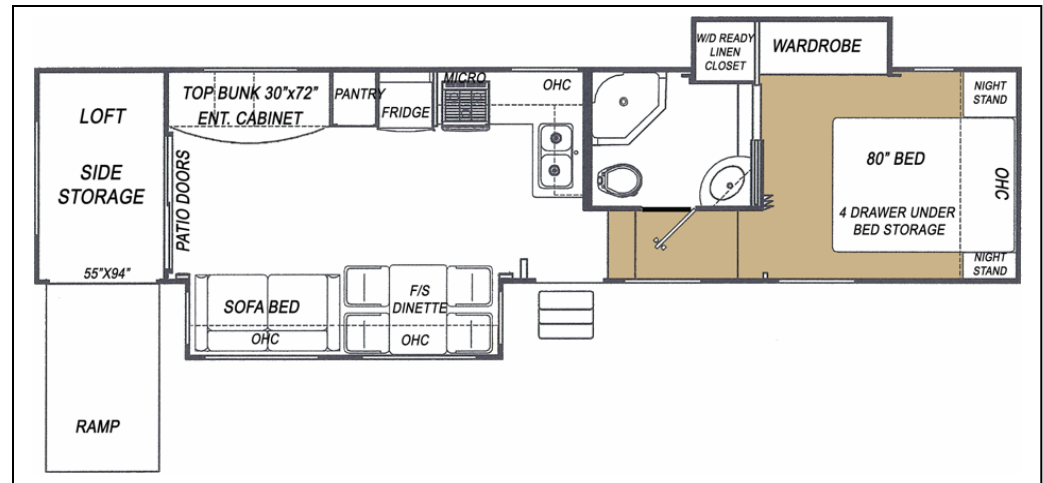
“NEW” 3136RBSS

FIFTH WHEEL

2009 MODEL YEAR

“SUPER STORAGE, LOFT BUNKS”

All specifications subject to change without notice or obligation



OVERALL LENGTH	LENGTH-PIN TO BUMPER	G.VW.R	DRY PIN WEIGHT	DRY WEIGHT	OVERALL HEIGHT	MAIN BODY WIDTH
38'-11"	33'-11"	13,900 lbs.	2,300 lbs.	10,869 lbs.	13'-2"	96"

CONSTRUCTION

SIDEWALLS: Vacuum bonded smooth *High Gloss* fiberglass siding, 1 1/2" light weight aluminum perimeter sidewall framing, and 1 1/2" rigid foam insulation.

R9 Insulation value.

ROOF: Seamless rubber roof membrane is bonded to 3/8" decking. Full 4 1/2" tapered metal truss framing. Thick fiberglass batt insulation, **R14 Insulation value.**

FLOOR: 5/8" deck flooring screwed and glued to 2"x4" main floor fane joists 16" O.C. Darco polyethelane moisture resistant barrier between chassis and floor. Seam guard under vinyl floor coverings. Fibergalss batt insulation **R12**, Flexfoil reflective insulation **R7**.

CHASSIS: "I" beam steel tube frame construction, 3" heavy duty axle assemblies, Goodyear ST235/780R16 E radial tires, 12"x2" electric brakes, under slung spare tire and rim, snap release pins on powered front landing gear, power landing gear includes a safety shut off switch, 2 stabilizer jacks.

SLIDEOUT SPECIFICATIONS: Low maintenance powerful rack and gear 12V direct drive motor system, flush floor design, manual system override.

INTERIOR CABINET DOORS: Raised panel & arch style beech cabinet doors. Easy-Glide metal roller system on all drawers.

ENTRANCE DOOR: 30" wide radius corner combination entrance door with screen and deadbolt lock, easy fold-away 24" triple rise entry steps, fold-away assist handle on entry door, porch light.

ENTERTAINMENT

STEREO: DVD/CD Tuner surround sound system..

TV ANTENNA: 12V Power TV antenna with booster.

TV HOOKUP: Standard equipment.

TELEPHONE JACK: Standard equipment.

SATELLITE HOOKUP: Pre-wired for quick dish connection to the RV.

AWNING

A&E 8500 Plus 13' AWNING: Pewter/White.

Awning features patented rugged steel roller tube and heavy duty torsion spring 8' extension.

PLUMBING & ELECTRICAL

Sealand Traveler Lite foot pedal flush china toilet with hand spray, Neo angle shower, Single lever brushed brass faucet in kitchen with telescopic sprayer, All-in-one solid surface counter and deep double sinks, Brushed brass single lever tap in bathroom, water heater by-pass kit.

HOLDING TANKS: Holding tanks are enclosed, insulated and heated, with black tank flush system, Garden style non-freeze drain tap on fresh water tank, sewage tank flush system.

HOLDING TANK CAPACITIES:

FRESH: 63 gallon **GREY:** 49 gallon **SEWAGE:** 49 gallon

ELECTRICAL CONVERTER: Progressive Dynamics 9200 series converter with built in Charge Wizard.

HOOKUP: 50 AMP.

STANDARD FEATURES

60"x80" Queen Bed, 8 cu ft refrigerator, Sofa Bed, Exterior rinse shower, Solid surface kitchen countertop w/ deep molded sinks, Nev-R-Lube axles, Porcelain toilet w/hand sprayer, Day/Night shades, Bath skylight above shower, Bullet style directional reading lamps, 3 burner range w/Piezo Ignition, 12V system quick disconnect switch, Spare tire and rim, Beech colored baseboards, Fold away entry assist handle, Roof ladder, Rear electric stabilizer jacks, Free standing Dinette Rubberized Equa-flex suspension, 30" microwave, Aluminum rims, W/D Ready, 15,000 BTU air conditioning, Pearl exterior graphics, Quiet 40,000BTU 2 stage furnace, 10 gal DSI water heater, Attic vents, Dual security lights, Electric front landing gear.

AVAILABLE OPTIONS

Electric fireplace, 30" Convection microwave, Slideout topper awning, 19" Bedroom LCD HD TV, 32" LCD HD TV, Generator Ready (LP & Elec. Lines, switch, harness, Box & Venting), Rough in Generator lines (LP/Electrical lines Only), 13,500 BTU 2nd air conditioner, Thermopane window (pre-production), Curbside slideout awning, MorRyde Pin Box.
REV.03/26/2008

Rear Cargo Hold Capacity = 1,200 lbs.