

# Titanium GLENDALE RV

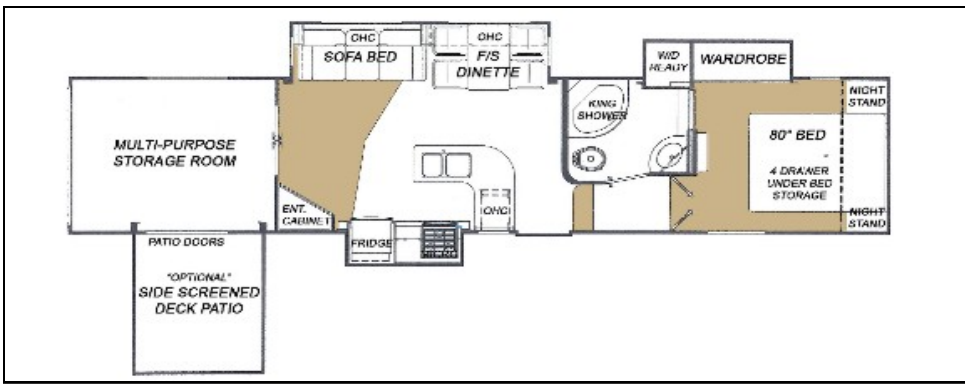
## 36E41MPRVSA

“Multi-Purpose Recreational Vehicle”

FIFTH WHEEL

2009 MODEL YEAR

All specifications subject to change without obligation 10/24/2008



OVERALL LENGTH	LENGTH-PIN TO BUMPER	G.V.W.R	DRY PIN WEIGHT	DRY WEIGHT	OVERALL HEIGHT	MAIN BODY WIDTH
42'-2"	36'-11"	15,670 LBS.	2,605 LBS.	12,606 LBS.	12'-8"	96"

### CONSTRUCTION

**SIDEWALLS:** Vacuum bonded smooth *High Gloss* “GEL COAT” fiberglass siding\*, 1 1/2” light weight aluminum tubular perimeter sidewall framing, 1 1/2” rigid foam insulation, **R9** Insulation

**ROOF:** Seamless rubber roof membrane is bonded to 3/8” decking, 4 1/2” tapered metal truss framing, thick fiberglass batt insulation, **R14** Insulation, moisture ventilation caps

**FLOOR:** 5/8" seamless floor decking screwed and glued to 2"x4" floor framing, Seamless moisture barrier between chassis and floor. Combination of fiberglass blanket & Radiant reflective insulation, **R19** insulation

**CHASSIS:** Combination powder coated steel beam chassis, 3” heavy duty axle assemblies include Nev-R- Lube wheel bearing assembly\*, Goodyear ST225/75R15 “D” radial tires, Hydraulic Disc Brakes\*. Quick load under chassis spare tire and carrier, wide stance dual power landing gear includes tamper-proof lockout switch\*, self-finding rear stabilizer jack assembly, concealed cargo area storage, battery compartment, easy access power distribution panel, lighted baggage area

**SLIDEOUT SPECIFICATIONS:** 6’ 6” ceiling height in living area slide out, Low maintenance powerful rack and gear 12V direct drive motor system, flush floor design, manual system override, decorative slide out fascia

**INTERIOR CABINET DOORS:** Raised panel solid Ash color cabinet doors, superior ball bearing drawer guides, O.H.C cabinet door struts, metal hardware  
**ENTRANCE DOOR:** 30” wide radius corner combination entrance door with screen and deadbolt lock, easy fold-away 24” Big Easy triple rise entry steps with extra wide treads\*, fold-away assist handle at entry door, porch light

### ENTERTAINMENT

**STEREO:** DVD/CD 5.1 Surround sound system with subwoofer,

**TV ANTENNA:** Winegard Ultimate Sensor.

**TV HOOKUP:** Bedroom and Living area TV prep

**TELEPHONE JACK:** Standard equipment.

**SATELLITE HOOKUP:** Pre-wired for quick dish connection.

### AWNING

A&E 9100Series Power 20’ Awning: Pewter/White.

Awning features patented rugged steel roller tube and heavy duty torsion spring 8’ extension,

### PLUMBING & ELECTRICAL

Sealand Traveler Lite- foot pedal china toilet with rinse spray, King shower, Single lever antique brass faucet in kitchen with telescopic sprayer, solid surface countertop with deep molded double sinks and molded sink cover, antique brass single lever tap in bathroom, telescopic bath shower fixture, water heater by-pass kit, under cabinet water filtration system, power ceiling vent.

**HOLDING TANKS:** Holding tanks are enclosed, insulated and heated, Garden style non-freeze drain tap on fresh water tank, sewage tank flush system. Universal water convenience center includes easy access to gate valves, exterior rinse shower, and other plumbing connections

### TANK CAPACITIES:

FRESH: 63 gallon GREY: 49 gallon SEWAGE: 49 gallon

**ELECTRICAL CONVERTER:** Progressive Dynamics 9200 series converter with built in Charge Wizard.

**HOOKUP:** 50 AMP(Includes detachable cord)

### STANDARD FEATURES

60”x80” Queen Bed with coil innerspring pillow top mattress, residential Sofa Bed in living area features 60”x80” inflatable bed and convenient Under sofa storage, 400 watt inverter, Day/Night shades, Bath skylight above shower, base boards and crown molding, Bullet style directional reading lamps, 3 burner range w/Piezo Ignition, 12V system quick disconnect switch, Roof ladder, Free standing Dinette

### OPTIONAL EQUIPMENT

Mor/Ryde Pin Box, Sofa Bed sleep & store inflatable system, Rear Electric stabilizer jacks, Electric fireplace, 30” Convection microwave, Slideout top awning, 10 cu ft Refrigerator PP-only, 19” Bedroom LCD TV, 32” LCD TV(mandatory), Generator Ready (LP & Elec. lines, Box & Venting), Rough in Generator lines(LP/Electrical lines Only), Coffee table, Leather Sofa Bed, 13,500 BTU 2<sup>nd</sup> air conditioner, Rear retractable screen, Screened side deck patio.

### EXTERIOR PACKAGE UPGRADE

**(Mandatory)**

High Gloss Gel coat vacuum bonded sidewall, Hydraulic disc brakes, MoRRyde RE Suspension, Dual exterior security lights, Nev-R Lube axles, Wide track easy fold triple entry steps, Thermopane windows, Aluminum Rims, Dual powered front landing gear, Premium exterior graphics package.

### MYSTIQUE EXTERIOR UPGRADE PACKAGE

**(PP-Only)**

“CIF” Full Body Color Infused Fiberglass, Color matched Awning and Hardware.

### INTERIOR COMFORT PACKAGE

**(Mandatory)**

Excalibur whisper quiet 40,000BTU 2 stage furnace, 15,000 BTU air conditioner w/trickle charge solar panel, hepa filter and cool down draft air diverter, W/D ready, Ceiling Fan, Fluorescent lighting, Digital wall mount dual control thermostat, 12V remote controlled powered roof vent, 30” microwave, Video distribution center, Central vacuum system, 9 cu ft refrigerator, Atwood XT DSI G/E 16 gallon output water heater.

[www.glendalerv.com](http://www.glendalerv.com)